

HYDROGRAPHIC NATIONAL REPORT OF LITHUANIA

1. Hydrographic Office

Hydrographic activities are carried out by the Hydrographic and Vessels' Traffic Monitoring Division (HVTMD) of Maritime Department of Lithuanian Transport Safety Administration (LTSA).

From 1st of December 2017 State Road Transport Inspectorate under the Ministry of Transport and Communications (SRTI) was merged with Lithuanian Maritime Safety Administration (LMSA) and became the new organization – Lithuanian Transport Safety Administration (LTSA). All functions, rights and obligations of both SRTI and LMSA will remain and will be performed by LTSA.

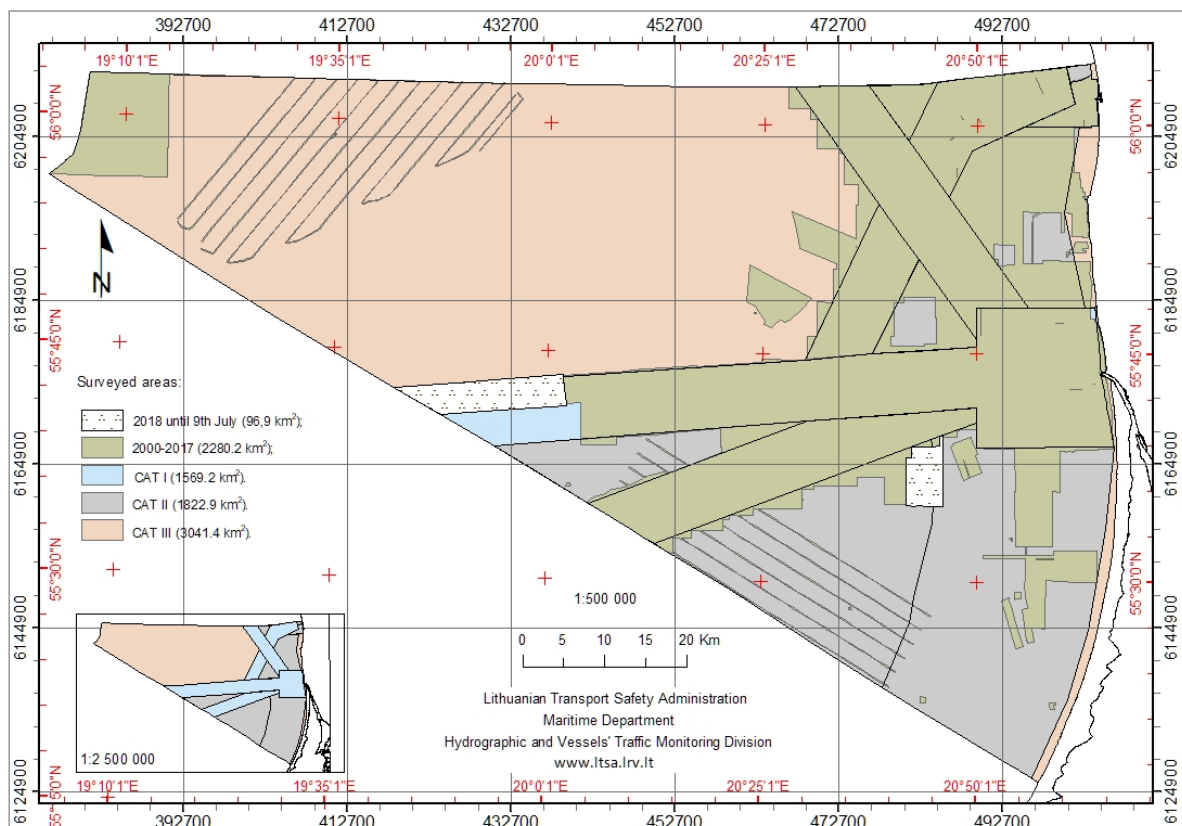
Ministry of Transport and Communications is the founder of LTSA. The institution is funded from state budget.

2. Surveys

For hydrographic surveying HVTMD has a 20 m long catamaran type survey vessel “VARŪNA”. During 2017-2018, while participating in the EU CEF co-financed project “FAMOS Odin: finalizing surveys for the Baltic motorways of the sea”, the surveying infrastructure was renewed and now the vessel is equipped with Kongsberg EM 2040C multibeam echosounder.

Surveys are conducted in priority areas i.e. main shipping routes and approaches (CAT I) and CAT II according to HELCOM-BSHC harmonised hydrographic resurvey scheme.

Nautical surveying is carried out according to the IHO S-44 standard and the data is used in nautical charting.



Up to Jul 2018 an area of **1508 km²** of main routes and approaches (CAT I) and **563 km²** of CAT II was surveyed.
In **2018** until 9th July there was surveyed an area of **96.9 km²** (see fig.).

3. New charts & updates:

ENCs

Lithuanian waters are covered by four ENCs in three navigational purpose bands:

Navigational purpose	Chart No.
<i>Coastal</i>	LT382001
<i>Harbour</i>	LT562510
<i>Harbour</i>	LT562520
<i>Berthing</i>	LT660710

One Coastal ENC and two Approach ENCs are in preparation.

Chart Distribution :

ENCs are distributed through PRIMAR and Seapilot AB.

RNCs

RNCs are not produced.

INT charts

INT charts are not produced.

National paper charts

Paper charts are produced from the same database as ENCs. Four paper charts are produced and three more are in preparation. Paper charts are not distributed.

4. New publications & updates:

New Publications

No new publications.

Updated Publications

Publication *Notices to Mariners* is issued on a quarterly basis.

Means of delivery

All publications can be found in digital form on the web page <http://old.msa.lt/msa/en/hydrography/nautical-publications.html>

5. MSI

Existing infrastructure for transmission.

National GMDSS VHF network along coastline for local Navigational Warnings. Service is provided by Lithuania's Navy MRCC Klaipeda on VHF in Lithuanian and English.

NAVAREA 1 Baltic sea subarea Coordinator Sweden takes responsibility for NAVTEX Service over Lithuanian waters and messages are transmitted by Swedish transmitters.

All navigational warnings are also published and can be found online on the web page <http://old.msa.lt/msa/en/hydrography/navigational-warnings-and-kq74/notices-to-mariners-scx9.html>

New infrastructure in accordance with GMDSS Master Plan

GMDSS network covering areas A1 and A2. No new construction during last Year.

6. C-55

Status of hydrographic survey of waters out to the limits of the EEZ:

Status of surveys	Adequat (%)	Resurvey (%)	No survey (%)
Depths 0 - 200m	36.95	63.05	0
Depths > 200m	0	0	0

Status of nautical charting within the limits of the EEZ:

Chart coverage	Passage (%)	Coastal (%)	Port (%)
INT	0	0	0
RNC	0	0	0
ENC	0	62	91

Status of Paper Charts

Paper charts with depths in metres (%)	100
Paper charts referenced to a satellite datum (%)	100

Navigational information (S-53):

MSI	Y/N	Comments on MSI
Local warning	YES	can be found on http://old.msa.lt/en/home-page.html
Coastal warning	YES	Transmitted by NAVAREA I Baltic Sea Sub-area Coordinator Sweden. Can be found on http://old.msa.lt/en/home-page.html
Nav warning	NO	Transmitted by NAVAREA I Baltic Sea Sub-area Coordinator Sweden.
Port warning	YES	can be found on http://old.msa.lt/en/home-page.html can be found on www.port.lt

GMDSS implementation (IMO Publication 970 - GMDSS Handbook)

GMDSS	Y/N	Comments on GMDSS
Master Plan	YES	
Area A1	YES	MRCC Klaipeda
Area A2	YES	MRCC Klaipeda
Area A3	NO	
NAVTEX	YES	Transmitted by NAVAREA I Baltic Sea Sub-area Coordinator Sweden.
SafetyNet	NO	

7. Capacity Building

Offer of or demand for Capacity Building

Nothing to report

Training received, needed, offered

Nothing to report

Status of national, bilateral, multilateral or regional development projects with hydrographic component

Participating in the EU CEF co-financed project “FAMOS Odin: finalizing surveys for the Baltic motorways of the sea”.

8. Oceanographic activities

Carried out by Maritime Research Department of Environmental Protection Agency (EPA):
<http://gamta.lt/cms/index?lang=en>

9. Other activities

Participation in IHO Working Groups

None

Meteorological data collection

Carried out by Lithuanian Hydrometeorological Service (under the Ministry of Environment):
<http://www.meteo.lt/en/>

Geospatial studies

Nothing to report

MSP/MSDI progress

The Maritime Spatial Planning (MSP) in Lithuania is included into the national legislation regulating spatial planning – Law on Territorial Planning and its secondary legal acts. The Comprehensive Plan of the Territory of Lithuania is complemented by the marine spatial solutions adopted on 11 June 2015 by the Parliament of Lithuania and is a legally binding document obligatory for the state governmental institutions. Part of the marine space (up to 20 m isobaths) also falls under the regulation of the Law of the Coastal Strip. MSP applies to the entire marine area of Lithuania including territorial waters and the exclusive economic zone (EEZ). A complete SEA for the MSP was elaborated including national and transnational consultations with Lithuanian stakeholders as well as with Sweden and Latvia.

With regards to SDI, The National Center for Remote Sensing and Geoinformatics „GIS-Centras“ (SE „GIS-Centras“) is the State Enterprise, responsible for update and distribution of the national official geographic databases. SE „GIS-Centras“ is in charge of management and development of the Lithuanian Spatial Information Infrastructure portal (www.geoportal.lt), which is the place also for marine spatial data.